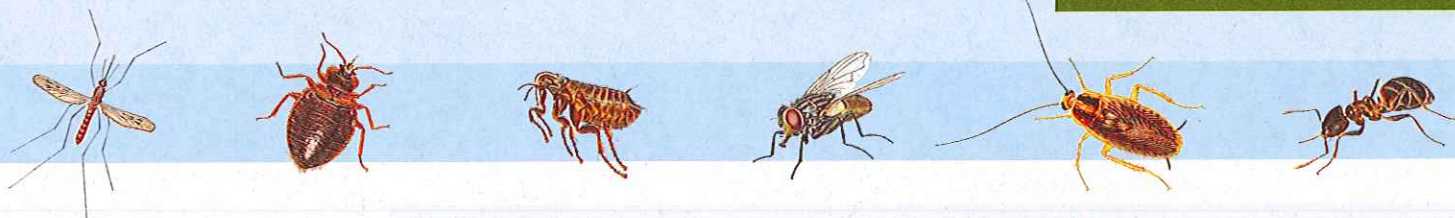




You can rely on Cislin 25 to get the job done

cislin[®]25



Cislin 25 is the new premium quality deltamethrin suspension concentrate that can be used with complete confidence inside and out.

Cislin has been a proven performer in Australia's Professional Pest Management industry for over 20 years; now it is available in a more concentrated form, which allows more compact packaging and easier measuring.

With the same broad level of activity and residual performance, high level of safety and formulation quality second to none it can be used with complete confidence both inside and out.

Target pests

- Cockroaches
- Ants
- Spiders
- Fleas
- Bedbugs
- Mosquitoes
- Flies
- Stored product pests
- Bark beetle
- Anobid and Bostrychid borers
- Silverfish
- Bird mites
- Carpet beetle
- Clothes moth

Areas of use

Domestic, commercial, industrial and public buildings including food processing establishments, shops, factories, ships, offices, schools, storerooms, hospitals, barracks, private houses and external areas associated with such establishments.

Features:

- ✓ 2.5 times more concentrated than other available deltamethrin-based products
- ✓ Water based suspension concentrate
- ✓ Non-staining
- ✓ Broad spectrum of activity
- ✓ Excellent knockdown and residual activity
- ✓ Registered for application to mattresses
- ✓ Available in 1 L chamber packs and 5 L jerry can

Benefits:

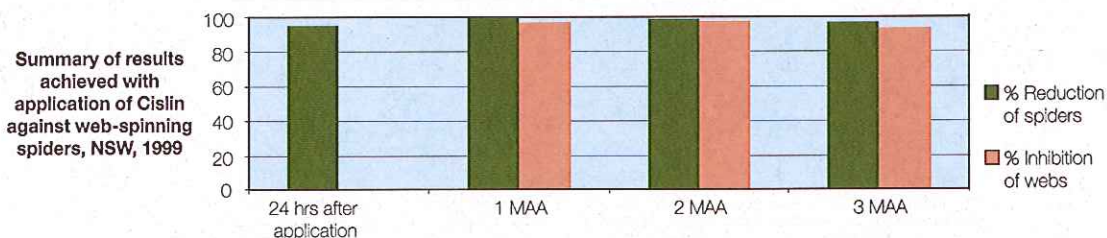
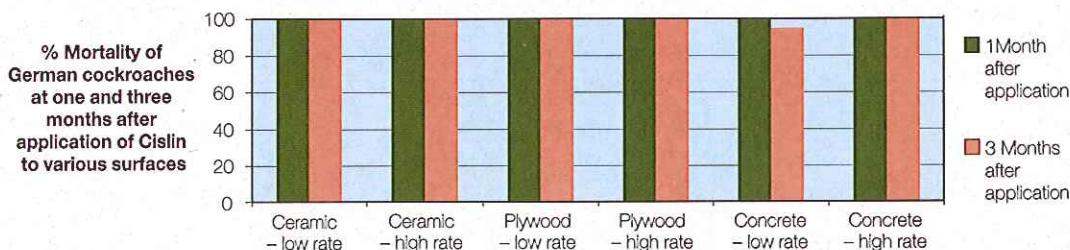
- ✓ Reduced weight in vehicles and reduced use of packaging
- ✓ No hydrocarbon solvents utilized resulting in low odour
- ✓ Can be used with confidence on a range of surface types
- ✓ Effective against a wide range of pests
- ✓ Client satisfaction and reduced call-backs
- ✓ Provides greater flexibility in bedbug management
- ✓ Easier measuring and handling

Application rate and delivery

- 7.5–15 mg active substance/m² (equivalent to 50 mL of diluted product/m²)
- Dilute 30-60 mL of concentrate in 5–10 L water; this will cover approximately 100 m² of surface area, depending on porosity of surface treated.

Comments on application:

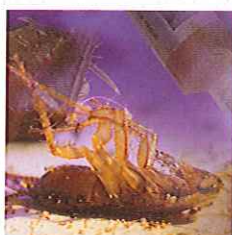
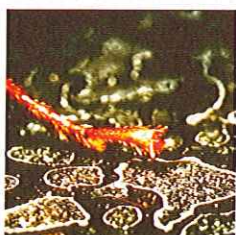
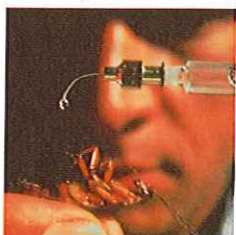
Cislin 25 contains a crystalline suspension of deltamethrin particles. Field and laboratory trials with Cislin demonstrate that commercially acceptable activity can be expected for at least several months, depending on the nature of the surface treated.



Through market leading Research and Development, Bayer Environmental Science is committed to providing quality, highly effective and safe pest management solutions for Pest Management Professionals.

Best practice guidelines:

- Conduct a thorough inspection prior to application of any chemical product.
- Read and follow directions on the label - there is information relating to specific pests which is intended to optimise control.
- Ensure spray tank is clean of residues of other formulations prior to use.
- Calibrate sprayer prior to application to ensure that target application rate is being achieved. For internal spraying a flat fan nozzle (eg. size 4001), producing a fine spray pattern is recommended. For external spraying use a medium to coarse flat-fan (eg. size 6502 or 6504) for evenly flat surfaces or a variable-cone/cone-jet (eg. X3 or X8) for general situations.
- Avoid application to surfaces which are cleaned regularly or which are very dirty or greasy.
- Monitor pest activity after product is applied - if control is not achieved then other methods may need to be employed (i.e. Integrated Pest Management).
- Where a surface may be susceptible to damage or staining, consider alternative control methods, or it is recommended that a small inconspicuous area be treated (and allowed to dry) first.



Product profile

Active ingredient information:

25 g/L deltamethrin

Insecticide group:

Synthetic pyrethroid

Formulation type:

Suspension concentrate

Pack sizes available:

1 L chamber pack and 5 L HDPE jerry can

Product safety

Personal protective equipment required:

Cotton overalls buttoned to the neck and wrist, washable hat, elbow-length PVC gloves and face shield.

No products produced by Bayer Environmental Science have been shown to be carcinogenic, teratogenic or mutagenic.

Regulatory information

APVMA Approval number: 62147

AQIS IOA Status: 14B

Poisons Schedule: Schedule 5 – Caution

Other regulatory information:

Use of this product according to the registered label is consistent with the requirements of HACCP Procedures used within food processing establishments.

Impact on the environment

All pesticides are regulated under the Agricultural and Veterinary Chemicals Act to ensure that they do not pose an unacceptable risk to human health and the environment.

For information regarding pesticide regulatory process please visit the Australian Pesticides and Veterinary Medicines Authority website at www.apvma.gov.au

Bayer Environmental Science is committed to sustainable development



In 2009 we moved Cislin from a 1% formulation to a 2.5% formulation. This change resulted in a saving of tens of thousands of litres of water at our Brisbane-based production plant and a concurrent reduction in volume of packaging used. The still relatively low concentration allows Cislin to retain one of the best profiles in terms of product safety in use. This information sheet is printed on 100% recycled paper using waterless printing process.



ALWAYS READ AND FOLLOW THE REGISTERED PRODUCT LABEL PRIOR TO USE.

Cislin® is a Registered Trademark of Bayer.

For more information on Cislin 25 contact Bayer Environmental Science
Ph: 1800 804 479 www.bayeres.com.au

Bayer Environmental Science
A Business Operation of Bayer CropScience
Bayer CropScience Pty Ltd
391-393 Tooronga Road
Hawthorn East Victoria 3123

Distributor Information