

# Cislin<sup>®</sup> ULTRA

Technical Information

Fast-acting, easy to use, reliable



Cislin Ultra Fast Shot is a water-based surface-spray aerosol containing the synthetic pyrethroids deltamethrin and s-bioallethrin.

Deltamethrin provides kill and residual efficacy and s-bioallethrin is a fast knockdown agent which stops pests in their tracks – fast. Being water-based, it has a low odour and can be applied in more sensitive areas than other products with strong solvent based odours.

### Key features:

- Fast-acting
- Good residual activity
- Ready-to-use
- Water based (low odour)
- High level of safety in use
- Ideal for application to cracks & crevices
- Same reliability as Cislin Residual Insecticide

### Application rate and delivery

- Ready-to-use aerosol can

### Comments on application

For best results spray pests directly (this product is not intended for application into the air for control of flying insects).

#### S-bioallethrin

Esbiol (s-bioallethrin) is a non-residual product belonging to the allethrin series of synthetic pyrethroids. It is an effective broad spectrum knockdown agent with very rapid onset of activity. It is rapidly decomposed in sunlight (UV light).

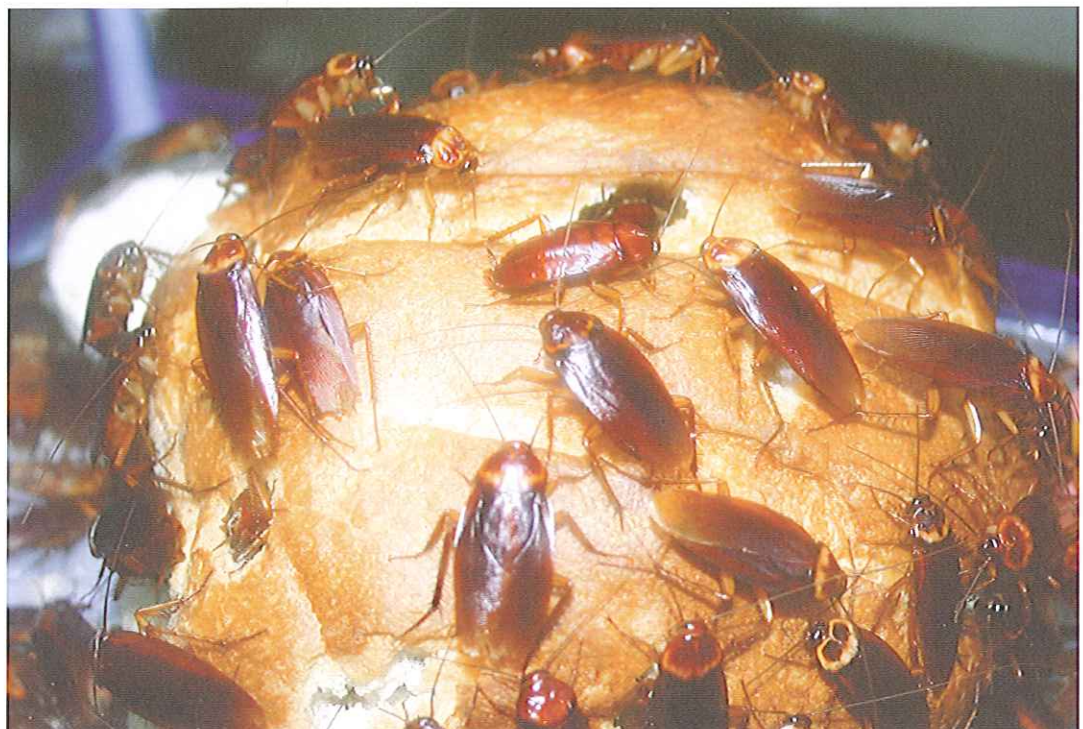


### Target pests

- Cockroaches
- Ants
- Silverfish
- Fleas
- Flies
- Mosquitoes

### Areas of use

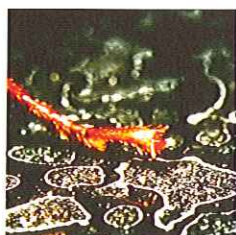
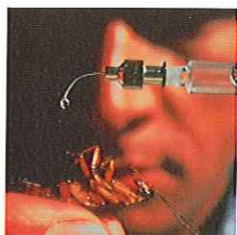
Domestic, commercial, public service and industrial areas



Through market leading Research and Development, Bayer Environmental Science is committed to providing quality, highly effective and safe pest management solutions for Pest Management Professionals.

### Best practice guidelines:

- ☑ Conduct a thorough inspection prior to application of any chemical product.
- ☑ Read and follow directions on the label.
- ☑ Apply directly to cracks and crevices for rapid knockdown and kill of crawling insect pests.
- ☑ Short, sharp applications into cracks and crevices are all that is required, there is no benefit to be had from prolonged sprays into small spaces, this will only increase run-off.
- ☑ Avoid application of this product around areas where cockroach gel baits have been applied (it could result in a repellent deposit which may limit bait uptake).
- ☑ To help prevent the development of insecticide resistance integrate the use of this product with other control techniques which utilise non-synthetic pyrethroid based technology (eg. bait gels).



### Product profile

#### Active substance information:

1.5 g/L s-bioallethrin 0.2 g/L deltamethrin

#### Chemical Group:

Synthetic pyrethroid

#### Formulation type:

Surface spray aerosol

#### Pack sizes available:

420 g

### Product safety

#### Personal protective equipment required:

None.

No products produced by Bayer Environmental Science have been shown to be carcinogenic, teratogenic or mutagenic.

### Regulatory information

APVMA Approval number: 62276

AQIS IOA Status: Category 14 Type B

Poisons Schedule: Schedule 5 (caution)

#### Other regulatory information:

Use of this product according to the registered label is consistent with the requirements of HACCP Procedures used within food processing establishments.

#### Impact on the environment

All pesticides are regulated under the Agricultural and Veterinary Chemicals Act to ensure that they do not pose an unacceptable risk to human health and the environment.

For information regarding pesticide regulatory process please visit the Australian Pesticides and Veterinary Medicines Authority website at [www.apvma.gov.au](http://www.apvma.gov.au)



Bayer Environmental Science

**ALWAYS READ AND FOLLOW THE REGISTERED PRODUCT LABEL PRIOR TO USE.**

Cislin® is a Registered Trademark of Bayer.

For more information on CISLIN ULTRA contact Bayer Environmental Science [www.bayeres.com.au](http://www.bayeres.com.au)

Bayer Environmental Science  
A Business group of Bayer CropScience  
Bayer CropScience Pty Ltd  
391-393 Tooronga Road  
Hawthorn East Victoria 3123  
Ph: 1800 223 002 Fax: 1800 223 112

QUEENSLAND  
NORTHERN TERRITORY  
Doug McCarron  
0428 149 104

NEW SOUTH WALES  
Paul Conratt  
0448 349 901

VICTORIA  
SOUTH AUSTRALIA  
WESTERN AUSTRALIA  
TASMANIA  
Jim Westhead  
0407 342 234

### Distributor Information