

# TEMPO®

Technical Information

Advanced technology gives you great all-round performance.



**TEMPO** is the latest in synthetic pyrethroid formulation technology.

The active ingredient betacyfluthrin has been adsorbed onto particles of an insoluble salt. This provides the residual performance of a standard suspension concentrate at half the amount of active applied and also means there's virtually no chance of paraesthesia-type effects.

The principle of this formulation was conceived with the demands of responsible use and sustainability in mind. So Tempo is better for you and better for your customers.

### Key features:

- Water based and low odour
- Excellent residual activity
- Very high level of safety in use
- Paraesthesia effects addressed through Patented Particle Technology
- Non-staining
- Broadest label claims in the industry (incl. millipedes, paralysis ticks, grasshoppers and crickets)
- Registered for use on turf and ornamentals – safe for use on plants

### Application rate and delivery

- 7.5–12.5 mg active substance per square metre (equivalent to 50 mL diluted product/ square metre).
- Dilute 6–10 mL of concentrate per litre of water. Apply at a rate of 5–10 L of prepared spray solution per 100 m<sup>2</sup> of surface area not exceeding the point of runoff.

### Comments on application

Tempo contains betacyfluthrin with unique coated-particle suspension technology. Field and laboratory trials conducted with this formulation demonstrate that commercially acceptable residual performance can be expected for at least several months, depending on the nature of the surface treated. Equivalent efficacy with this product has also been demonstrated with a much lower dose of active ingredient compared to standard SC formulations of betacyfluthrin. Use for the control of honeydew producing insects as part of ant management programs.

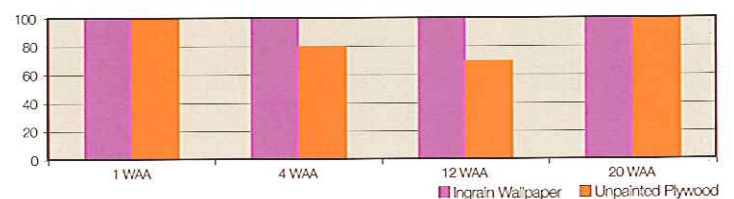
### Target pests

- Bedbugs
- Cockroaches
- Spiders
- Ants
- Fleas
- Mosquitoes
- Flies
- Silverfish
- Stored product pests
- Crickets
- Paralysis ticks
- Grasshoppers
- Millipedes
- Carpet beetle
- Clothes moths
- Armyworm
- Cutworm
- Webworm
- Billbug
- Argentine stem weevil
- Scarab beetles
- Sawfly larvae
- Aphids, Thrips
- Mealy bug
- Lace bug
- Caterpillars
- Garden weevil
- Whiteflies

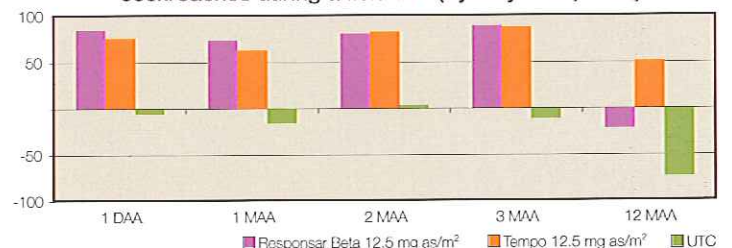
### Areas of use

Domestic, commercial, industrial and public buildings – including food processing establishments, shops, factories, farm buildings, ships, offices, schools, storerooms, hospitals, barracks, private houses and external areas associated with such establishments. Turf. Native plants. Ornamental species.

Residual activity (% control) of Tempo (at 6 ml/L) against bedbugs on two commonly occurring surfaces up to 20 weeks after application (WAA).



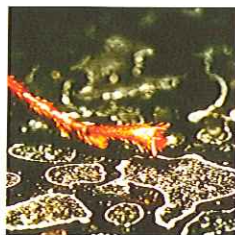
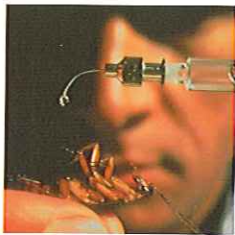
Comparison of Resposar Beta and Tempo residual activity (% control up to 12 months) against German cockroaches during a field trial (Sydney NSW, 1996).



Through market leading research and development, Bayer Environmental Science is committed to providing quality, highly effective, low risk and environmentally sustainable solutions for insect, disease and weed management.

### Best practice guidelines:

- ✓ Conduct a thorough inspection prior to application of any chemical product.
- ✓ Read and follow directions on the label - there is information relating to specific pests which is intended to optimise control.
- ✓ Ensure spray tank is clean of residues of other formulations prior to use.
- ✓ Calibrate sprayer prior to application to ensure that target application rate is being achieved. For internal spraying a flat fan nozzle (eg. size 4001), producing a fine spray pattern is recommended. For external spraying use a medium to coarse flat-fan (eg. size 6502 or 6504) for evenly flat surfaces or a variable-cone/cone-jet (eg. X3 or X8) for general situations.
- ✓ Avoid application to surfaces which are cleaned regularly or which are very dirty or greasy.
- ✓ Monitor pest activity after product is applied - if control is not achieved then other methods may need to be employed (i.e. Integrated Pest Management).
- ✓ Where a surface may be susceptible to damage or staining, consider alternative control methods, or it is recommended that a small inconspicuous area be treated (and allowed to dry) first.



### Product profile

**Active ingredient information:**

25 g/L betacyfluthrin

**Insecticide Group:**

Synthetic pyrethroid

**Formulation type:**

Suspension concentrate

**Pack sizes available:**

1 L and 2.5 L

### Product safety

**Personal protective equipment required:**

Cotton overalls buttoned to the neck and wrist (worn over normal clothing), a washable hat and elbow length PVC gloves.

No products produced by Bayer Environmental Science have been shown to be carcinogenic, teratogenic or mutagenic.

### Regulatory information

**APVMA Approval number:** 54134

**AQIS IOA Status:** 14 B

**Poisons Schedule:** Schedule 5 – Caution

**Other regulatory information:**

Use of this product according to the registered label is consistent with the requirements of HACCP Procedures used within food processing establishments.

**Impact on the environment**

All pesticides are regulated under the Agricultural and Veterinary Chemicals Act to ensure that they do not pose an unacceptable risk to human health and the environment.

For more information regarding pesticide regulatory process please visit the Australian Pesticides and Veterinary Medicines Authority website at: [www.apvma.gov.au](http://www.apvma.gov.au)



**Bayer Environmental Science**

**ALWAYS READ AND FOLLOW THE REGISTERED PRODUCT LABEL PRIOR TO USE.**

Tempo® is a registered trademark of Bayer.

For more information on TEMPO contact Bayer Environmental Science [www.bayeres.com.au](http://www.bayeres.com.au)

Bayer Environmental Science  
A Business Operation of Bayer CropScience  
Bayer CropScience Pty Ltd  
391-393 Tooronga Road  
Hawthorn East Victoria 3123  
Ph: 1800 223 002 Fax: 1800 223 112

**QUEENSLAND  
NORTHERN TERRITORY**  
Doug McCarron  
0428 149 104

**NEW SOUTH WALES**  
Paul Conradt  
0448 349 901

**VICTORIA  
SOUTH AUSTRALIA  
WESTERN AUSTRALIA  
TASMANIA**  
Jim Westhead  
0407 342 234

### Distributor Information